

# SET INSTRUCTIONS

**Adult assistance will be required to set up the race track for very young drivers.  
Read right through these instructions before starting to assemble the race track.**

## Helpline

Telephone: 01843 233525

email: [customer care@hornby.com](mailto:customer care@hornby.com)

Fax: 01843 233527

[www.scalextric.com](http://www.scalextric.com)

## RACING INSTRUCTIONS

- Speed of the car is controlled by the hand controller trigger. The more you squeeze the trigger the faster the car will go.
- Slow down for the bends by releasing the trigger.
- If the car is going too fast on the bend it will fly off the track.

## SAFETY NOTES

- This product is not suitable for children under 3 years of age because of small parts which can present a choking hazard. Some components have functional sharp points and edges – handle with care.
- This product is intended for indoor use only.
- The transformer is not a toy. It is a “Transformer for Toys”. Before use, check that the transformer is the correct voltage for your mains electricity supply. This set is only to be used with the recommended transformer. The transformer should be examined regularly for damage to the casing, plug pins and cables. **In the event of such damage, the set should not be used until the transformer is replaced with a new Hornby recommended unit. Never attempt to open the transformer yourself.**
- This set must not be connected to more than the recommended number of power supplies. The output terminals of the transformer must not be connected directly, or indirectly, to the output of any other AC circuit derived from a transformer or mains power supply.
- When new, hand controllers may become warm, emit vapour and give off a slight smell. These effects are normal due to the protective coating on internal parts and will disappear after use. However, they may return if the trigger is held continuously in a fixed position while racing.
- Before cleaning any part, disconnect the transformer from the mains electricity supply. **Do not use liquid for cleaning.**
- Please retain these details and the address for future reference.



Waste electrical products should not be disposed of with household waste. Please recycle where facilities exist. Check with your Local Authority or retailer for recycling advice.

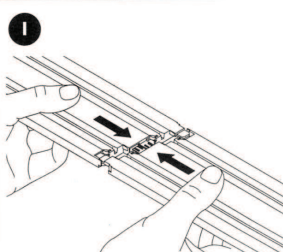
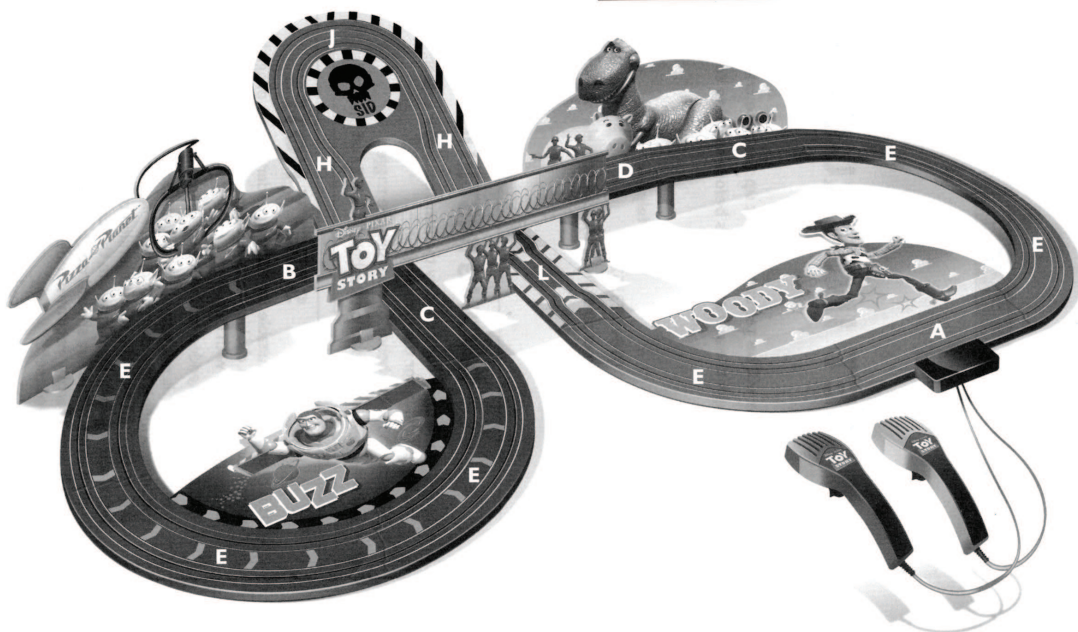
## CONTENTS

	x 1
	x 1
	x 1
	x 2
	x 1
	x 1
	x 2
	x 1
	x 6
	x 2
	x 1
	x 1
	x 4
	x 11
	x 4
	x 6
	x 12

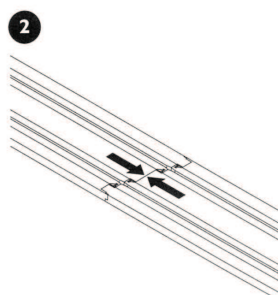
	x 1
	x 2
Spare Part No. W1573	

## FAULT FINDING

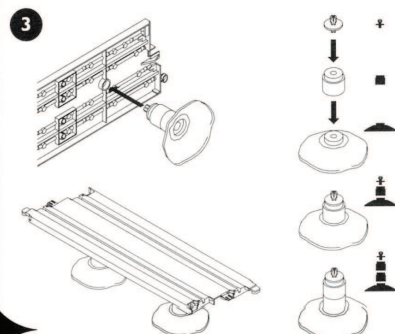
- Body comes off after crash – refit by lining up the clips on the body and chassis and push to close.
- Cars do not run – the braids may need cleaning or bending out towards the track or changing, see overleaf.



Make up the race track by carefully identifying the different track sections in the track diagram from the illustrated contents list. Push the track sections firmly together in a straight line.

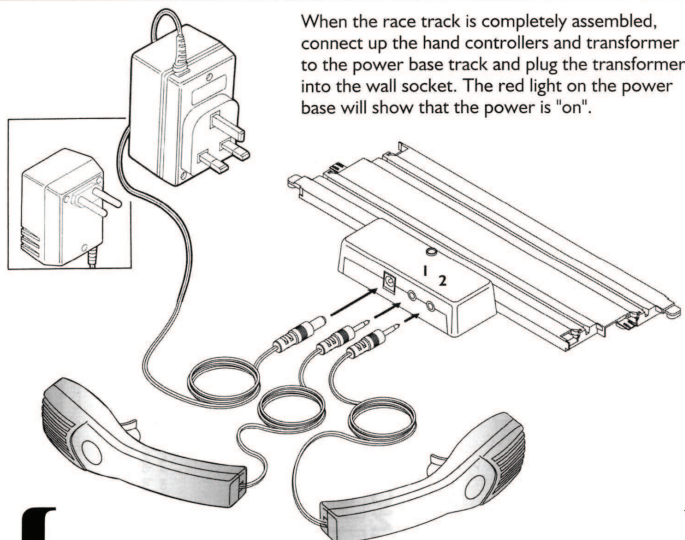


Make sure the sections are fully clipped together.



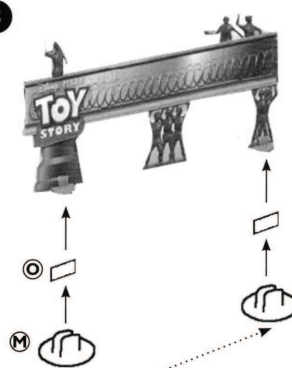
Fit the track supports to make a bridge in the race track. The supports can be made to the height required by varying the number of sections.

6



When the race track is completely assembled, connect up the hand controllers and transformer to the power base track and plug the transformer into the wall socket. The red light on the power base will show that the power is "on".

5

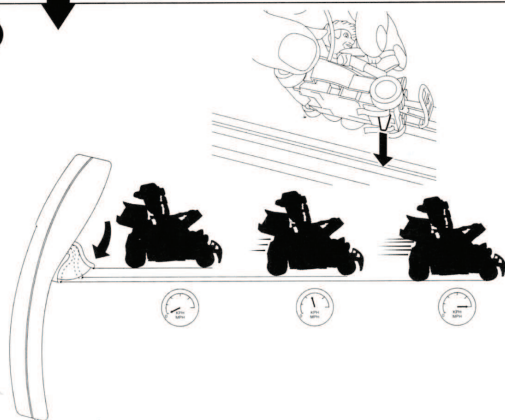


Packing pieces will need to be added to each support.

4

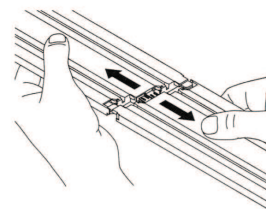


7



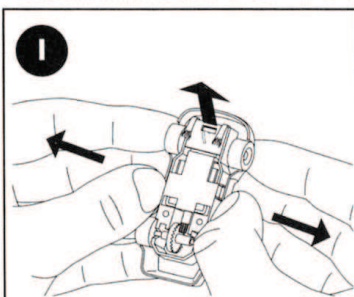
Place a car on one side of the track with its guide fin in the slot between the metal rails. Slowly squeeze the trigger of its hand controller to make the car go around the track. Now put the other car on the other lane and use the other controller to test it. If both cars work on both lanes of the track, you are ready to race. Remember – the more you squeeze the trigger, the faster the cars will go, so take it easy at first!

## Taking the track apart

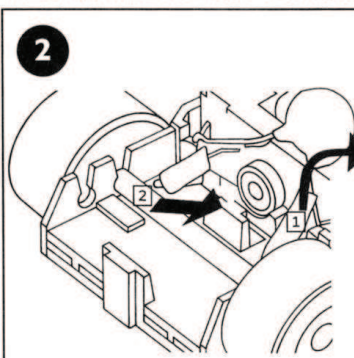


When dismantling the race track, pull the track sections apart in a straight line.

# CHANGING THE BRAIDS & CAR MAINTENANCE

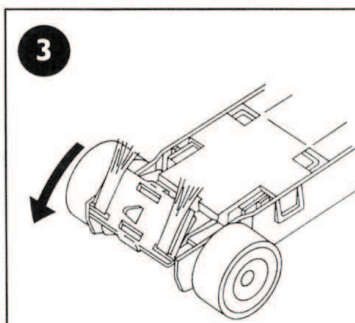


After a while, the pick-up braids underneath the cars may become worn out and need replacing. To do this, turn the car over and unclip the body from the chassis.

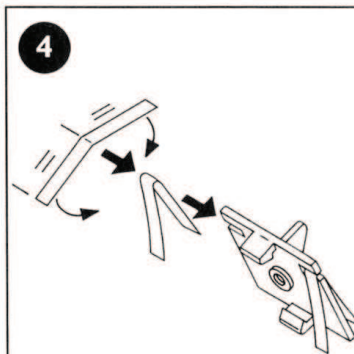


Carefully bend the orange/brown capacitor back to reveal the guide blade clip. Unclip the rear of the guide blade by pressing BACK & DOWN on the clip from the inside of the chassis with a SCREWDRIVER.

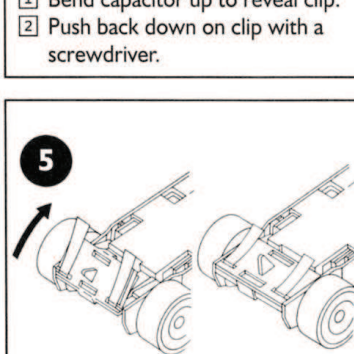
- 1 Bend capacitor up to reveal clip.
- 2 Push back down on clip with a screwdriver.



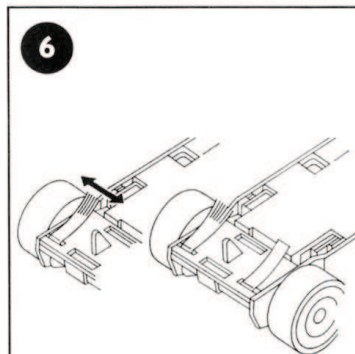
Turn the chassis over and remove the braid plate from its front clip.



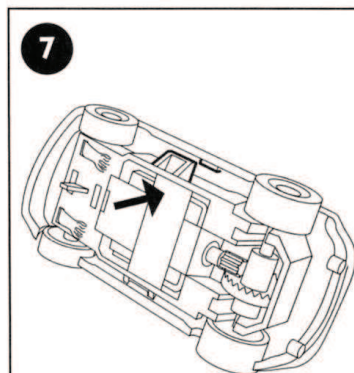
Fit new braids to replacement guide plate. The braids should be folded so that the ends on top of the guide plate are 10mm long.



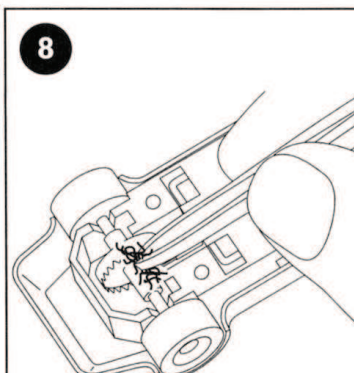
Fit the assembled guide plate assembly on to the chassis by engaging the front clip first and then the rear clip.



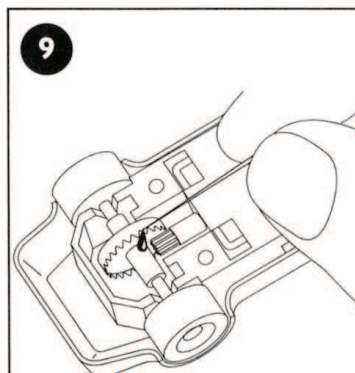
Refit the car body and tease out the ends of the braids so they make good contact with the pick-up rails in the track.



To refit the body to the chassis, clip one side in first followed by the other.

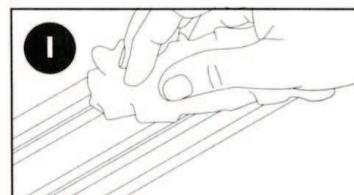


Remove any carpet fibres, pet hairs etc., from around the car's axles and gear wheel.

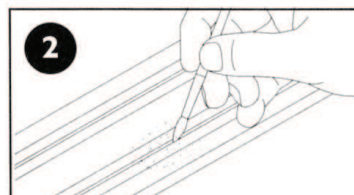


Periodically, oil the axle bearings and gear wheel with one drop of light machine oil.

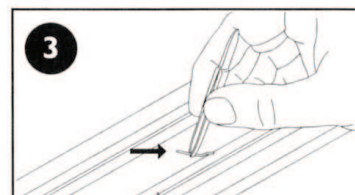
## TRACK MAINTENANCE



Always keep track clean by wiping over with a non-fluffy cloth, especially before putting the set away. Keep the pick-up rails shiny by rubbing carefully with a nylon "Scotch" washing-up pad or track cleaning rubber, reference R8087, obtainable from Hornby stockists.



Keep the slot between the pick-up rails free from anything which would prevent the guide fin from travelling along it freely.



Make sure anything made of metal does not bridge the two pick-up rails which would cause a short-circuit.

4 If a short-circuit does occur, the automatic cut-out in the transformer will come into operation and shut off power to the track. In this case, unplug the transformer from the wall socket, eliminate the reason for the short-circuit and plug the transformer back in again. Note: The transformer must remain unplugged for at least 45 seconds to allow the cut-out to reset itself.

## **HORNBY SERVICE WARRANTY**

Hornby products are guaranteed against defects in materials or workmanship for a period of six months from purchase.

If any such defect occurs during the period of warranty, please contact a Scalextric dealer for assistance. A full list of service dealers can be found on [www.SCALEXTRIC.com](http://www.SCALEXTRIC.com)

Alternatively, the product (or component), may be forwarded to Hornby Hobbies Limited, carefully packed, with a note enclosed giving full details to:

Repairs Department, Hornby Hobbies Limited, Westwood, MARGATE, Kent CT9 4JX

The product will be repaired or replaced, free of charge, if the problem is found to be due to either workmanship or materials.

This warranty is valid for products purchased in the United Kingdom and is in addition to, and does not diminish, your statutory rights.

### **Helpline**

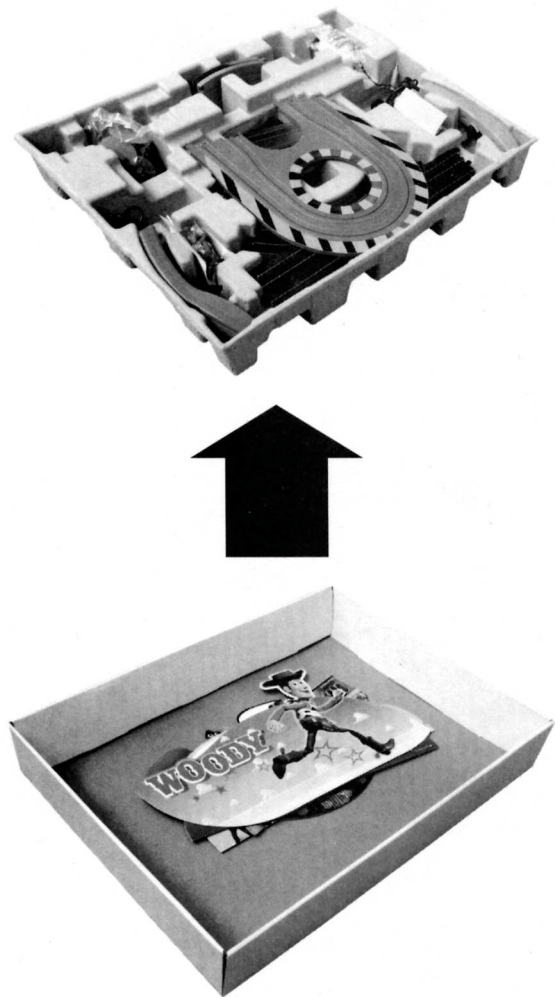
Telephone: 01843 233525

email: [customercare@hornby.com](mailto:customercare@hornby.com)

Fax: 01843 233527

[www.scalextric.com](http://www.scalextric.com)

CARD SCENERY UNDER PULP TRAY



M5169