

# SET INSTRUCTIONS

**Adult assistance will be required to set up the race track for very young drivers.  
Read right through these instructions before starting to assemble the race track.**

## Helpline

Telephone: 01843 233525  
email: [customercare@hornby.com](mailto:customercare@hornby.com)

Fax: 01843 233527  
[www.scalextric.com](http://www.scalextric.com)

## RACING INSTRUCTIONS

- Speed of the bike is controlled by the hand controller trigger. The more you squeeze the trigger the faster the bike will go.
- Slow down for the bends by releasing the trigger.
- If the bike is going too fast on the bend it will fly off the track.

## SAFETY NOTES

- This product is not suitable for children under 3 years of age because of small parts which can present a choking hazard. Some components have functional sharp points and edges – handle with care.
- This product is intended for indoor use only.
- The transformer is not a toy. It is a “Transformer for Toys”. Before use, check that the transformer is the correct voltage for your mains electricity supply. This set is only to be used with the recommended transformer. The transformer should be examined regularly for damage to the casing, plug pins and cables. **In the event of such damage, the set should not be used until the transformer is replaced with a new Hornby recommended unit. Never attempt to open the transformer yourself.**
- This set must not be connected to more than the recommended number of power supplies. The output terminals of the transformer must not be connected directly, or indirectly, to the output of any other AC circuit derived from a transformer or mains power supply.
- Use only as indicated in the instructions. Do not modify or change any part of the set. Modification may damage the set and will invalidate the warranty claim. Use only genuine Scalextric spares and accessories available from your retailer or [www.scalextric.com](http://www.scalextric.com).
- When new, hand controllers may become warm, emit vapour and give off a slight smell. These effects are normal due to the protective coating on internal parts and will disappear after use. However, they may return if the trigger is held continuously in a fixed position while racing.
- Before cleaning any part, disconnect the transformer from the mains electricity supply. **Do not use liquid for cleaning.**
- Please retain these details and the address for future reference.



Waste electrical products should not be disposed of with household waste. Please recycle where facilities exist. Check with your Local Authority or retailer for recycling advice.

CONTENTS



x 2



x 2



x 1



x 1



x 3



x 1



x 8



x 2



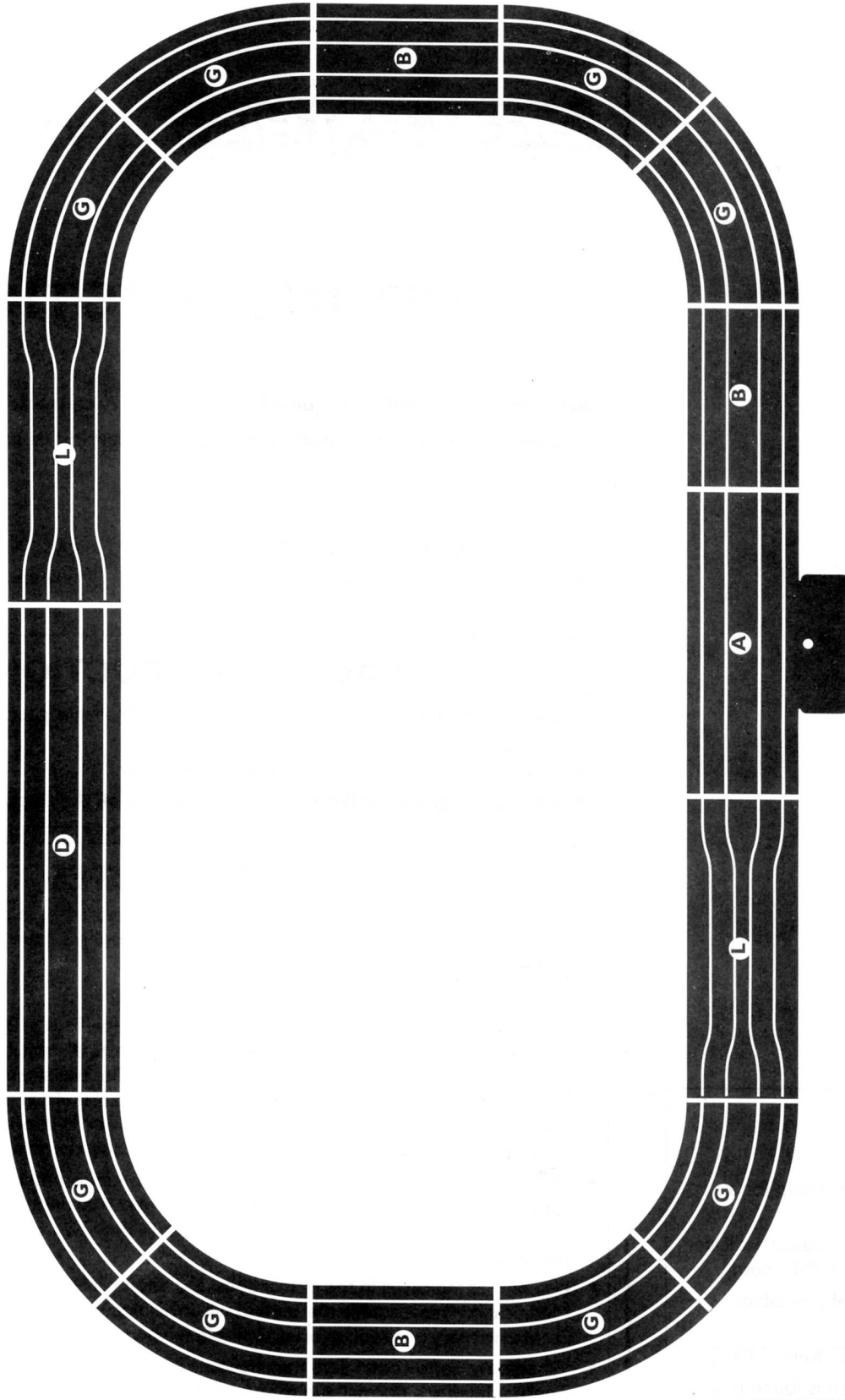
x 2



Guide Blade Plate x 2

Braids x 4

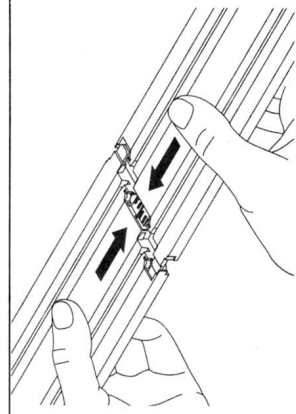
Spare Part No. W1577



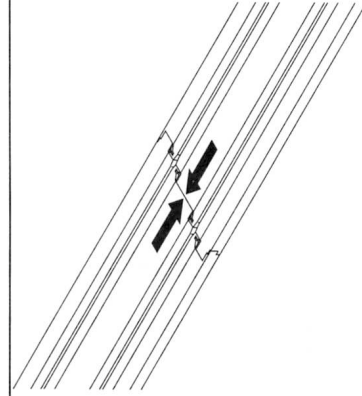
FAULT FINDING

- Body comes off after crash – refit by lining up the clips on the body and chassis and push to close.
- Bikes do not run – the braids may need cleaning or bending out towards the track or changing, see overleaf.





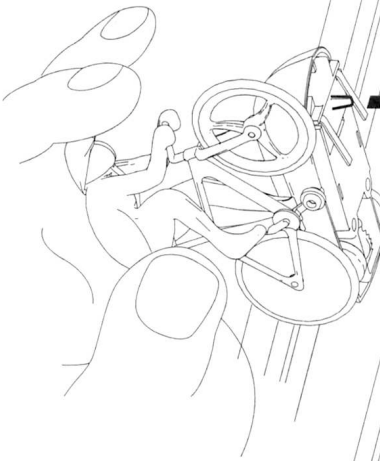
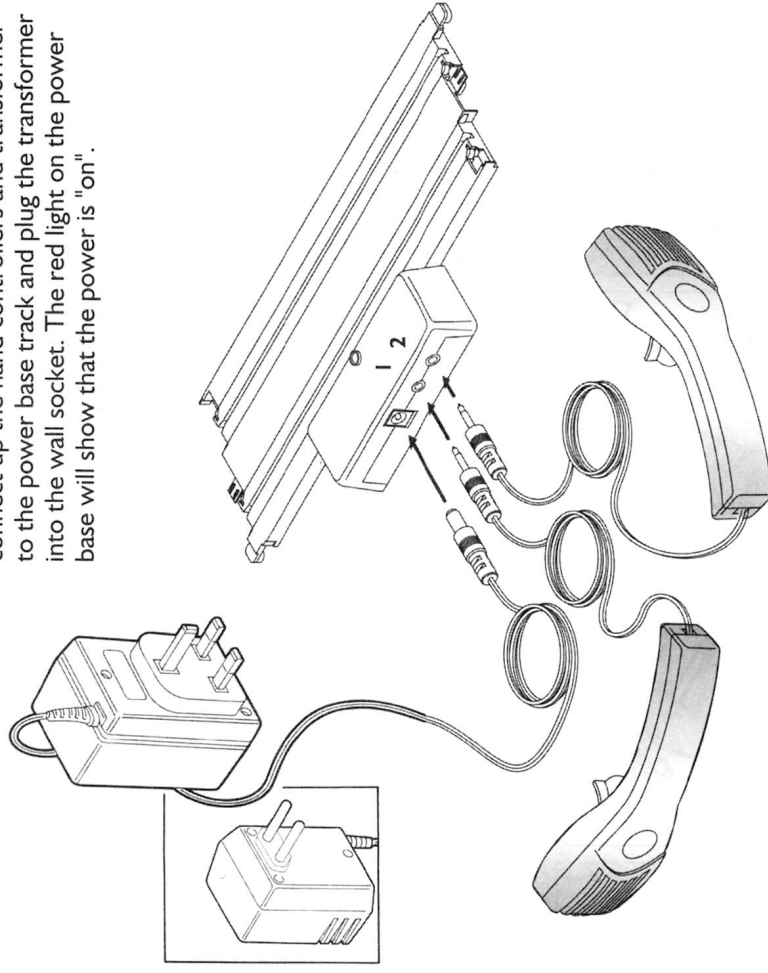
**1** Make up the race track by carefully identifying the different track sections in the track diagram from the illustrated contents list. Push the track sections firmly together in a straight line.



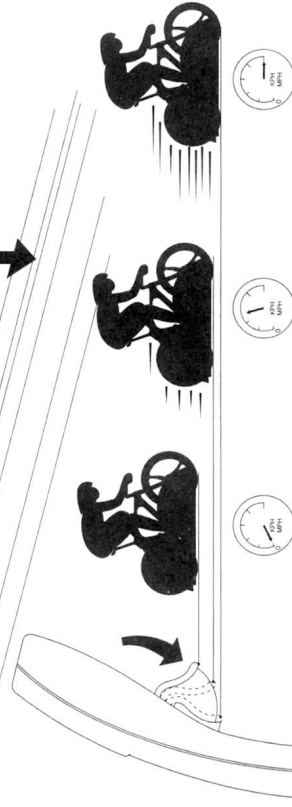
**2** Make sure the sections are fully clipped together.

**3**

When the race track is completely assembled, connect up the hand controllers and transformer to the power base track and plug the transformer into the wall socket. The red light on the power base will show that the power is "on".



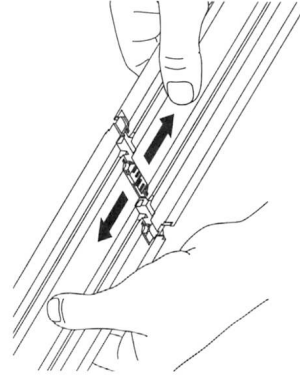
**4** Never secure trigger in on position. Trigger must be able to be fully released.



Place a bike on one side of the track with its guide fin in the slot between the metal rails. Slowly squeeze the trigger of its hand controller to make the bike go around the track. Now put the other bike on the other lane and use the other controller to test it. If both bikes work on both lanes of the track, you are ready to race. Remember – the more you squeeze the trigger, the faster the bikes will go, so take it easy at first!

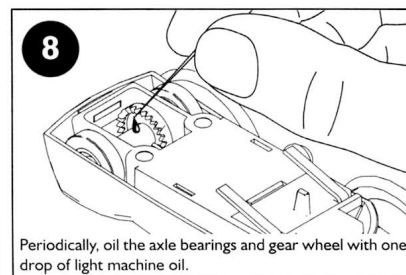
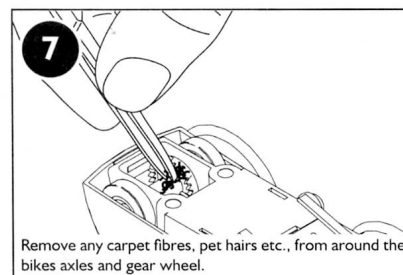
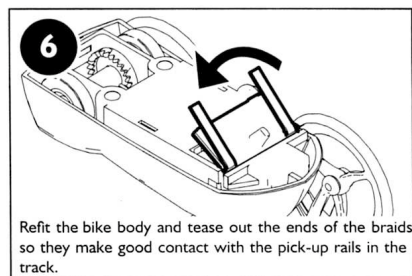
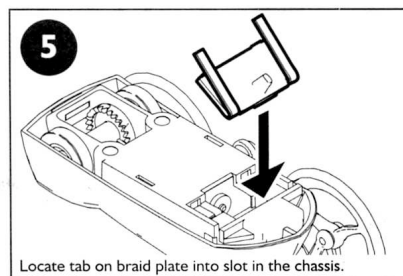
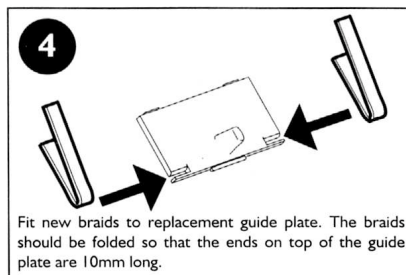
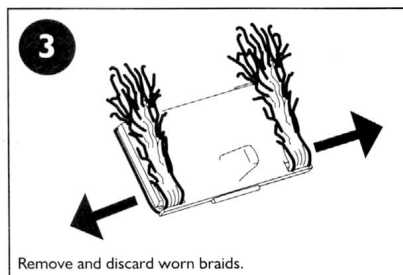
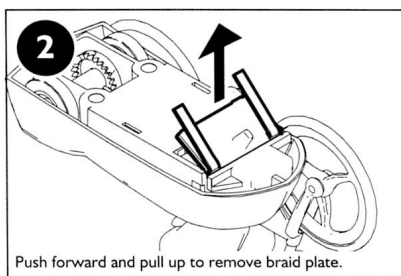
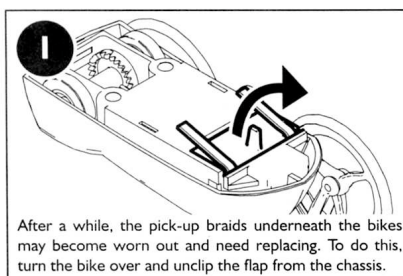
**5**

**Taking the track apart**

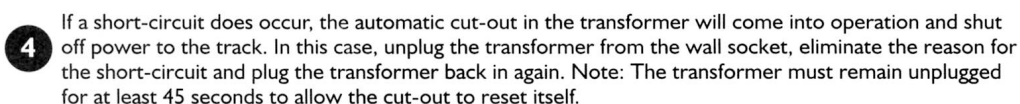
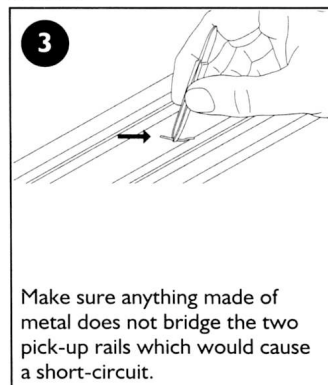
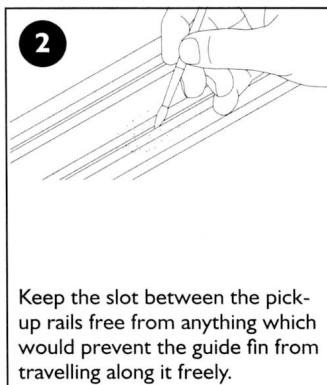


When dismantling the race track, pull the track sections apart in a straight line.

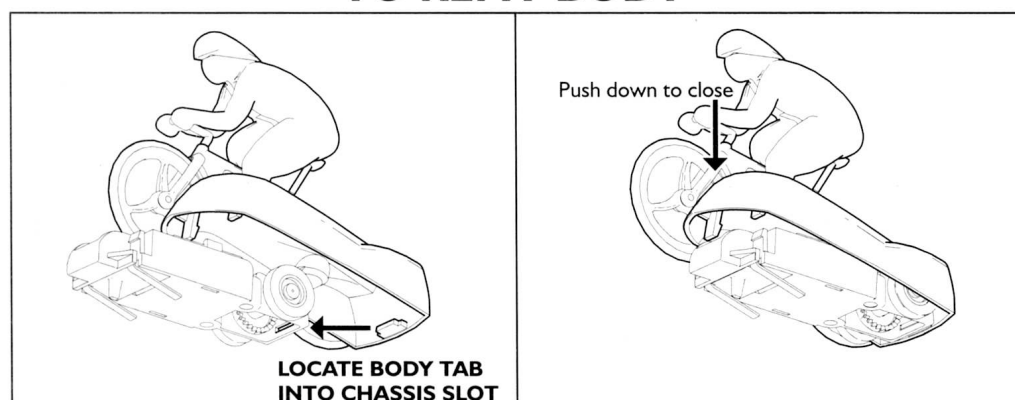
## CHANGING THE BRAIDS & CHASSIS MAINTENANCE



## TRACK MAINTENANCE



## TO REFIT BODY



## **HORNBY SERVICE WARRANTY**

Hornby products are guaranteed against defects in materials or workmanship for a period of six months from purchase.

If any such defect occurs during the period of warranty, please contact a Scalextric dealer for assistance. A full list of service dealers can be found on [www.SCALEXTRIC.com](http://www.SCALEXTRIC.com)

Alternatively, the product (or component), may be forwarded to Hornby Hobbies Limited, carefully packed, with a note enclosed giving full details to:

Repairs Department, Hornby Hobbies Limited, Westwood, MARGATE, Kent CT9 4JX

The product will be repaired or replaced, free of charge, if the problem is found to be due to either workmanship or materials.

This warranty is valid for products purchased in the United Kingdom and is in addition to, and does not diminish, your statutory rights.

### **Helpline**

Telephone: 01843 233525

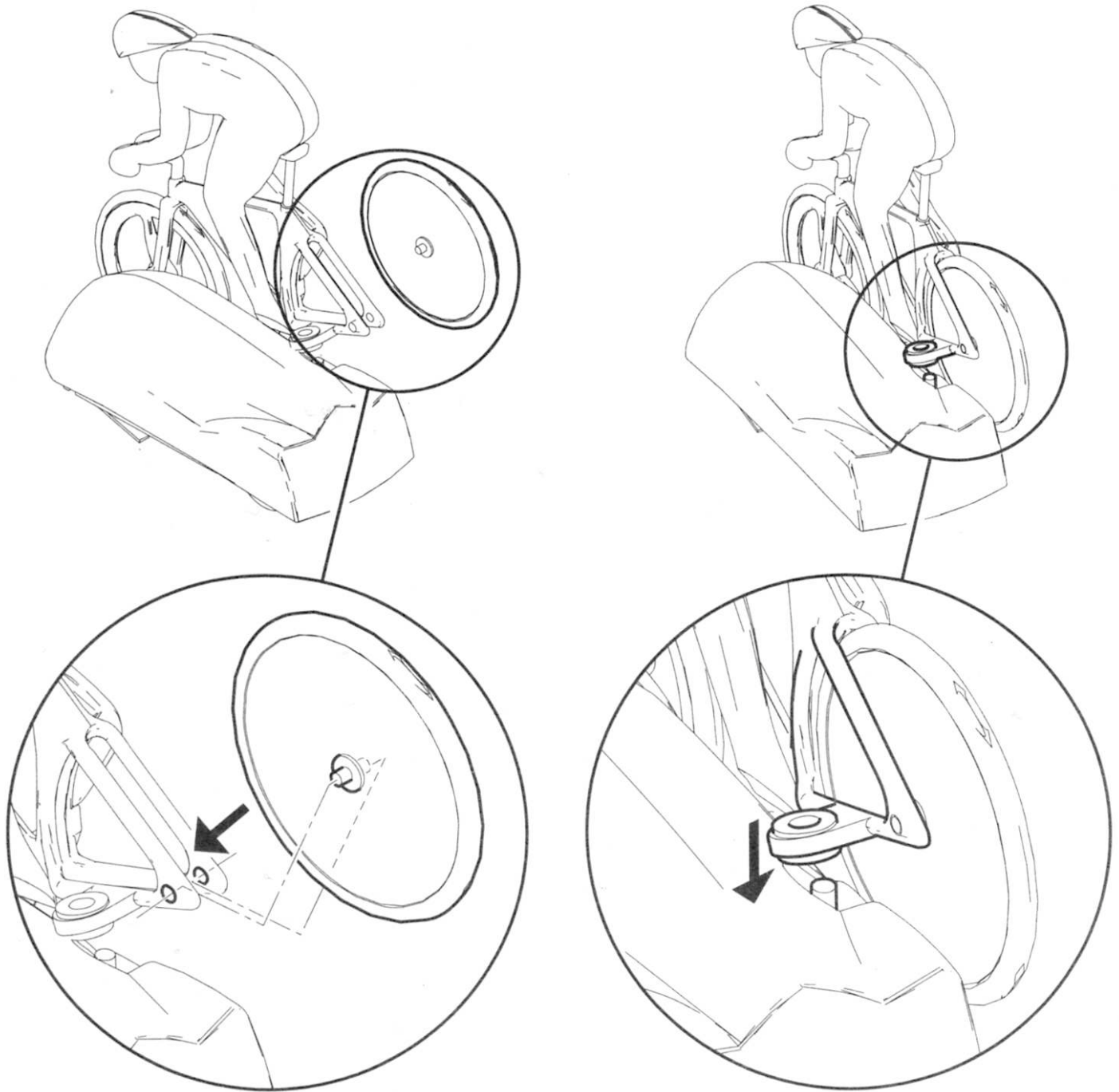
email: [customercare@hornby.com](mailto:customercare@hornby.com)

Fax: 01843 233527

[www.scalextric.com](http://www.scalextric.com)



# CYCLE RESET



# BRAIDS

